

markilux by Aquarius Blinds



markilux pergola 210 / pergola 210 tracfix

round, square, functional –

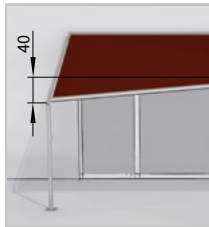
protection from the sun and inclement weather for large areas

The markilux 8800 conservatory awning system with slender support posts,
can be lowered on one side – optionally with tracfix system

**rated to wind resistance class 3
(corresponds to Beaufort 6)**



end cap and guide track



single unit with lowered support post (dimensions in cm)



the post can be lowered by between 20 cm and 40 cm: winch handle operation of the markilux pergola 210



when fully extended the rounded front profile sits flush with the end of the guide tracks, giving the system a completely homogeneous appearance



coupled unit – up to 3 fields are available (only on request)



closed appearance thanks to the tracfix system – the tracfix system does away with the annoying gap between the cover and the guide track



coupled unit with lowered support posts (dimensions in cm)

Design Features

the cassette profile, the guide tracks, the front profile and the front support posts complement one another perfectly and result in a large but nevertheless very elegant patio shading system

large scale awning system resting on slender posts with unobtrusive lateral guide tracks

for long-lasting attractiveness the awning is powder coated in the standard colours traffic white, metallic aluminium, grey brown or anthracite metallic

when fully extended the rounded front profile sits flush with the end of the guide tracks, giving the system a completely homogeneous appearance

Technical Specification

manual height adjustment possible on one side – to ensure water drainage at a minimum installation pitch of 7°; if the pitch is at least 14° water drainage can be guaranteed even if the support post is not lowered

vertical, manual adjustment of the support post by between 20 cm and 40 cm (depends on the awning size) by means of winch handle-operated gearbox inside the post

standard height of the front support posts 250 cm, other heights (from 152 cm to 250 cm) on request

Optional Accessories

coupled units up to 3 fields wide are available in the markilux pergola 210 (only on request)

vertical solar protection and more privacy is optionally available with the 230 cm high shadeplus / drop valance

radio-controlled motor with markilux remote control – ergonomically shaped

polyester powder coating in non-standard colours is available to individual order (prices on request, longer lead time)

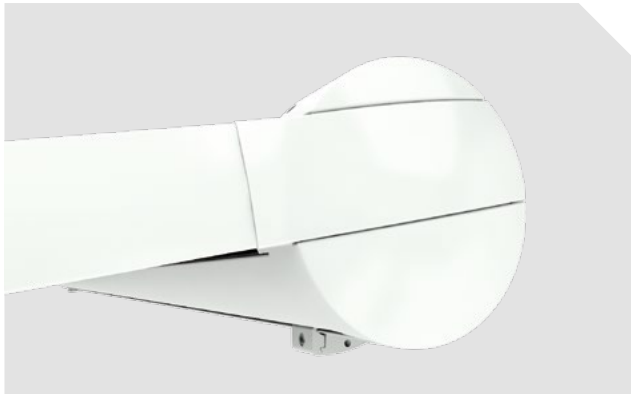
wall sealing profile to cover the gap between awning and wall; effective up to an awning pitch of 25°

closed appearance thanks to tracfix system (optional) without the annoying gap between the cover and the guide track

Frame colours

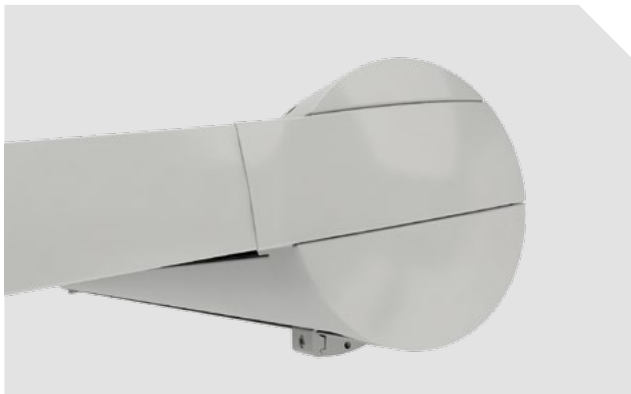
traffic white

RAL 9016



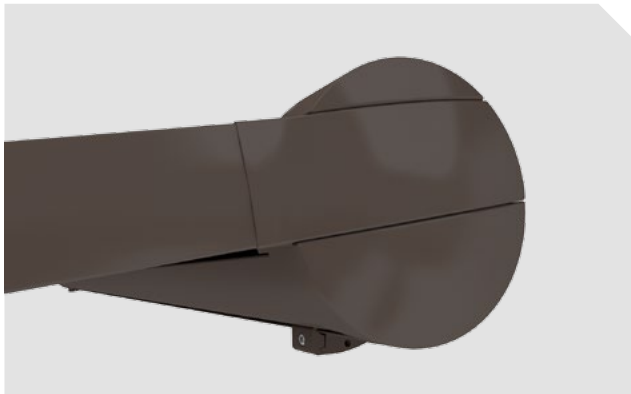
metallic aluminium

RAL 9006



grey brown, similar to

RAL 8019



anthracite metallic

5204



Colours similar to those in the RAL chart. Colours may differ slightly from those depicted in both hue and finish.